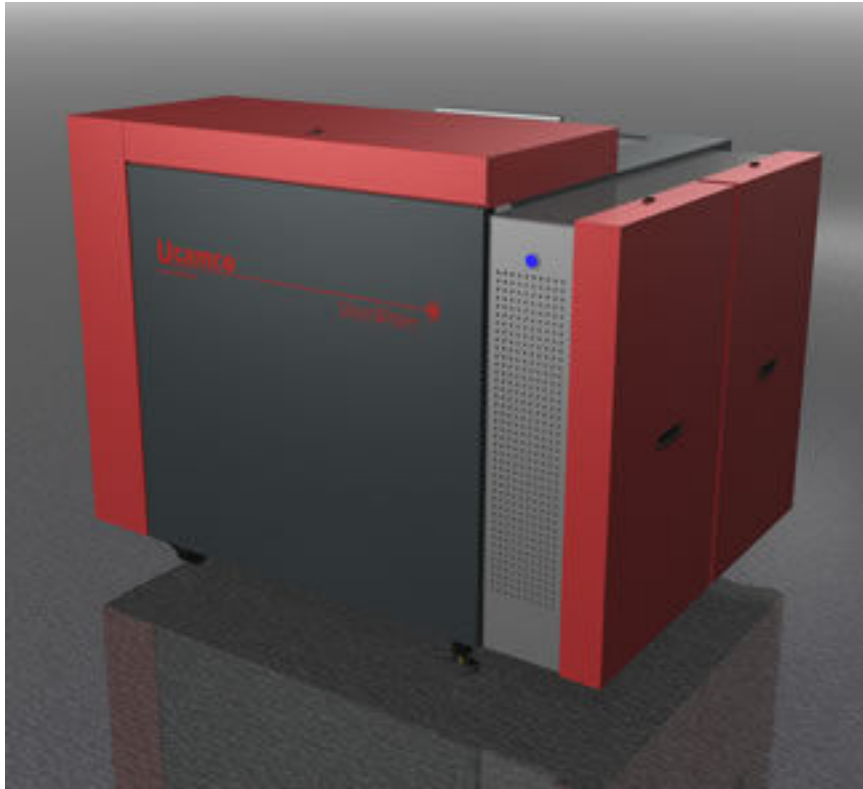


SilverWriter 8800-P / 8820-P / 8850-P



- **60% higher film throughput**
- **Resolutions up to 25,400 ppi**
- **1 – 3 Film Magazines**
- **Unequaled Accuracy**
- **100% Automation**
- **“Wheel-in” Flexibility**
- **Highest Uptime Record**

Raising the throughput benchmark

The new SilverWriter 8000-P series introduces sophisticated new film-handling and operational sequencing to deliver up to **60% more films** per hour than Ucamco's previous market leader, the SilverWriter 800. **15 times faster** data processing handles the most complex PCB files without rasterizing delays. For maximum flexibility and cost control all machines can take **3 independent magazines** holding a total of **450 sheets** of film of 3 different sizes. New drive technology delivers unrivalled **uptime** and long-term reliability plus a **30% smaller foot-print** for easier installation.

Unequaled accuracy

With its unique optical system the SilverWriter 8000-P will plot the tightest toleranced designs with pin-sharp quality. 16 plot resolutions up to **25,400 ppi** (1µm) deliver the optimum setting for every image down to **10µm** features. Two unique imaging functions, syntectic modulation and **sub-micron** pixel-placement, eliminate the rounding errors found on conventional plots and hold line-width accuracy below 2µm. Dynamic beam positioning and the patented stress-free film loader ensure an unrivalled **geometric accuracy** on every plot for perfect side-to-side registration.

Reliable 24/7/52

The SilverWriter 8000-P is engineered for round the clock, **long-term reliability**. The ultra-stable granite bed, maintenance-free linear motor, air-bearings and the new direct-drive drum deliver unparalleled long-term uptime - your guarantee of on-time deliveries, low whole life costs and an optimum return on your investment.

Compatibility and choice

The SilverWriter 8000-P accepts plot instructions directly in UCAM, Genesis, OI5000 (Expert) or MDA formats, making it a “wheel-in” replacement for conventional plotters. **Choose** from standard, double or quad speed, up to 16 resolutions (metric and imperial) per machine, & 1 - 3 film magazines. With a well-proven **upgrade path** we can set up a SilverWriter 8000-P to your precise requirements now and in the future.

Ucamco 
Former Barco ETS

© Ucamco NV
Bijenstraat 19, B- 9051 St.-Denijs-Westrem
Tel: +32 (0) 9 2169900 - Fax: +32 (0) 9 2169912
e-Mail: info@ucamco.com

SilverWriter

8800-P

8820-P

8850-P

Technical Data

Resolutions				
Imperial	4,000 up to 25,000 ppi & 2000 ppi draft quality			
Metric	6.25 µm up to 1 µm & 12.5 µm draft quality			
Min. line width	0.4 mil	10 µm		
Productivity for an 18" x 24" panel		8800-P	8820-P	8850-P
2,000 ppi (in films / hour)		13.1	21.5	31.7
4,000 ppi (in films / hour)		7.4	13.1	21.5
8,000 ppi (in films / hour)		3.9	7.4	13.1
16,000 ppi (in films / hour)		2.0	3.9	7.4
25,000 ppi (in films / hour)		0.9	1.9	3.6
Film Requirements				
Film format along the drum	18" – 32" in ½" steps	457 – 813 mm		
Film format around the drum	24" – 29" in 1" steps	610 – 736 mm		
Max. image format along the drum	0.2" (5 mm) less than film format			
Max. image format around the drum	0.9" (23 mm) less than film format			
Sheet tolerance	± 0.02"	± 0.5 mm		
Accuracy				
Geometric plotter accuracy	< 0.16 mil	< 4 µm		
Geometric plotter repeatability	< 0.08 mil	< 2 µm		
Global positioning accuracy	0.01 mil	0.25 µm		
Geometric accuracy on film	< 0.5 mil	< 12.5 µm		
Geometric repeatability on film	< 0.5 mil	< 12.5 µm		
Line-width accuracy	< 0.08 mil	< 2 µm		
Scaling adjustments	in steps of 0.2 µm			
Scaling adjustment range	± 5%			
Machine Characteristics				
Loading capacity	Up to 3 magazines. 150 sheets of film in each			
Light source	red HeNe laser, 632.8 nm, 5 mW			
Dimensions (W x D)	72.8" x 61"	1850 x 1550 mm		
Height	54.3"	1380 mm		
Weight	3300 lbs	1500 kg		
Room temperature during operation	70° F ± 2°	21° C ± 1°		
Relative humidity during operation	50% ± 2%, no condensation			
Relative humidity rate of change	Max 6% per hour			
Electrical Power Supply	2 x 230 VAC, 2,000 VA			
Heat dissipation	2,000 W (1,725 kcal/h)			
Compressed air supply	87 – 145 PSI	6 – 10 bar		
Compressed air quality	free of oil and water	0.01 mg/m³		
Compressed air volume	88 ft³/hour	2500 l/hour		



© Ucamco NV
 Bijenstraat 19, B- 9051 St.-Denijs-Westrem
 Tel: +32 (0) 9 2169900 - Fax: +32 (0) 9 2169912
 e-Mail: info@ucamco.com